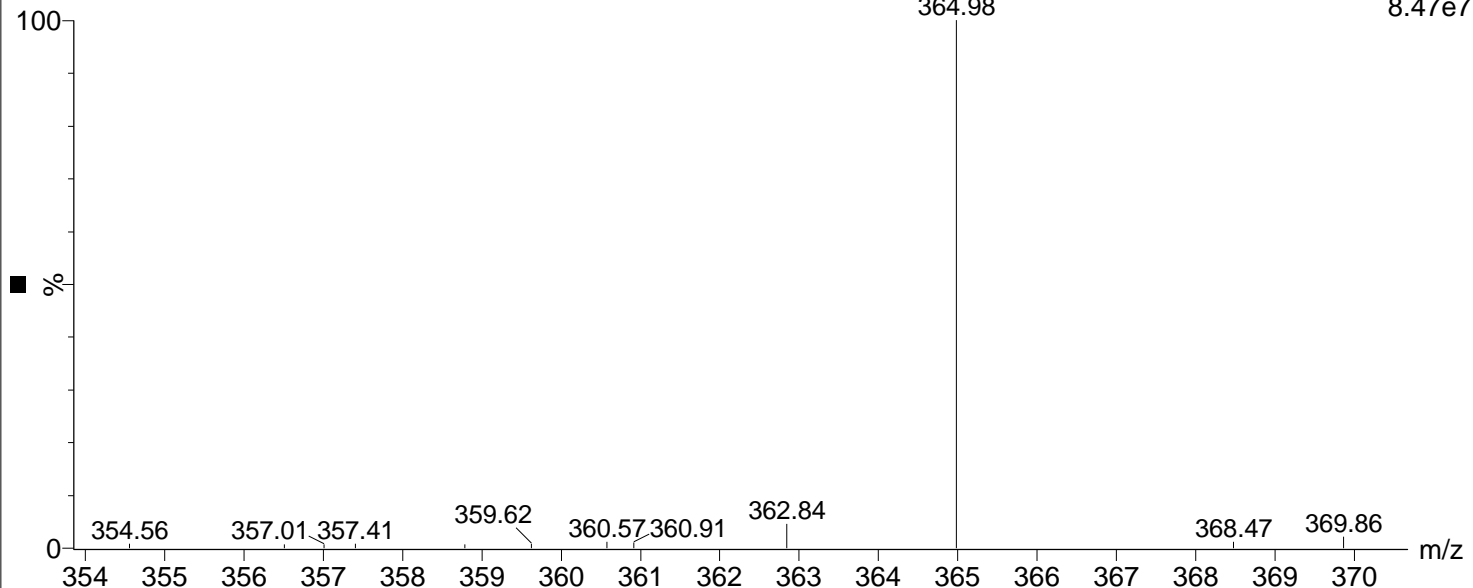


test-8

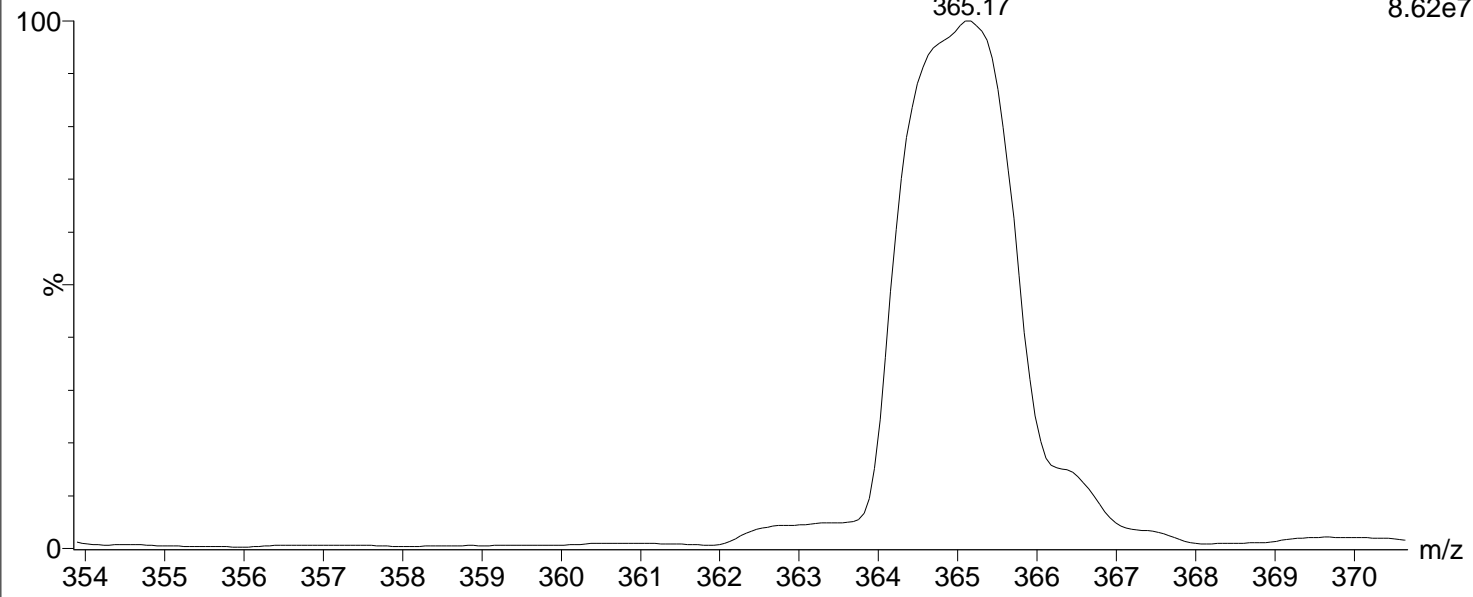
TEST-8 467 (1.635) Cn (Cen,2, 80.00, Ht); Sm (Mn, 2x0.50); Cm (141:504)

MS2 ES+  
8.47e7



TEST-8 467 (1.635) Sm (Mn, 2x0.50); Cm (141:504)

MS2 ES+  
8.62e7



TEST-8 467 (1.635) Cm (141:504)

MS2 ES+  
8.71e7

